

HOW TO REACH IIT HYDERABAD

IITH Address:

Indian Institute of Technology Hyderabad,
Kandi, Sangareddy, Telangana. - 502284

BY CAR/BIKE/CAB FROM MAJOR CITY BUS STATIONS

From	Route	Approx. Shortest Distance (km)	Google route map link
Mahatma Gandhi Bus Station (MGBS or Imliban)	MGBS-Nampally Railway Station-Lakdikapul-Mehdipatnam-Gachibowli-Lingampally-Patancheru (PTC)-Isnapur-IITH	60 km	https://maps.app.goo.gl/ZwioBfX15j5Y9PJA6
	MGBS-Nampally Railway Station-Lakdikapul-Ameerpet-Kukatpally-Miyapur-Lingampally-Patancheru (PTC)-Isnapur-IITH	65 km	https://maps.app.goo.gl/cvNMMqMpchS4FNm19
Jubilee Bus Station (JBS)	Secunderabad Railway Station-JBS-Balanagar-Kukatpally-Miyapur-Lingampally-Patancheru (PTC)-Isnapur-IITH	50 km	https://maps.app.goo.gl/w6Mgt4ZABmCrCDHM9

BY BUSES – There are two types of buses viz., District buses and City buses.

District buses: From MGBS or JBS board district buses towards Sangareddy/Zaheerabad/Narayankhed. Get down at the IITH bus stop.

City Buses: Board the following buses from major city bus stations towards Patancheru

From	To	Bus numbers
MGBS	Patancheru	225C/A, 225C, 218, 217.
JBS (Note: Boarding can be done at Secunderabad Railway station also)	Patancheru	219, 226, 226A

From City major railway stations

1. From Nampally railway station, take a city bus that starts from MGBS as shown above.
2. From Secunderabad railway station, board a city bus towards Patancheru (PTC) that starts here.
3. From Lingampally railway station
 - a. Come to Lingampally bus stop by share auto
 - b. Board district buses.

BY METRO STATION

1. From MGBS,
 - a. Board metro station at MGBS going towards Ameerpet
 - b. Disembark at Ameerpet and
 - c. Board a metro train towards going to Miyapur
 - d. Take a bus from Miyapur that is going from MGBS or JBS to Patancheru
 - e. From Patancheru you can take district buses.
2. From JBS
 - a. Board metro station at JBS going towards Miyapur
 - b. Take a bus from Miyapur that is coming from MGBS or JBS to Patancheru
 - c. From Patancheru you can take district buses.

FROM RAJIV GANDHI INTERNATIONAL AIRPORT (RGIA)

BY CAR/CAB: Take ORR get down at Patancheru exit, go towards Mumbai-on-Mumbai Highway on NH65 and reach IITH.

BY BUS: Take a “PUSHPAK” airport bus upto Gachibowli flyover. Take a bus that is going from MGBS towards Patancheru. Bus timings are mentioned in this link <https://tgsrtc.telangana.gov.in/Airport-Pushpak-Bus-Timings.php>

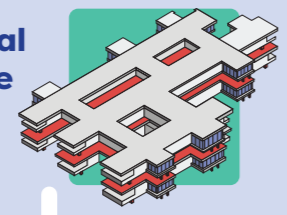
INTRA IITH TRAVEL DETAILS:

Please check the bus schedule here. https://www.iith.ac.in/bus_schedule/

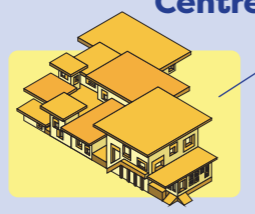
Check the internal map of IITH for important conference places in the next page.



International Guesthouse



Convention Centre



Faculty Towers

Staff Towers

Security Office

IITH Tower

Main Entrance

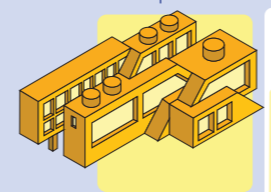
Isthara Circle

TRP



ITIC Building

Department of Design



Lecture Halls



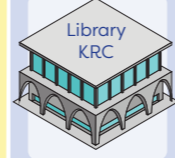
Mess B

New Hostels



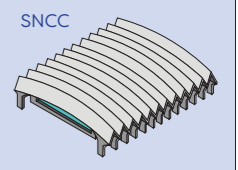
Hospital

Hall Of Fame
Admin Block



Research Centre

SNCC



Amphitheatre

Married Housing

Old Girls Hostels

Mess A

Hostels

Old Hostels



NESCAFÉ



Old Sports Ground



Scan for full bus schedule

- Conference Venues
- Accommodation Venues

Bus Timings

Interval of 15 mins between
07.30 hrs & 08.30 hrs,
10.00 hrs & 13.00 hrs,
14.30 hrs & 17.30 hrs,
19.30 hrs & 23.30 hrs

Interval of 10 mins between
08.30 hrs & 10.00 hrs,
13.00 hrs & 14.30 hrs,
17.30 hrs & 19.30 hrs,

- Bus Stop
- Eateries
- Hospital
- Parking
- Bus Route
- Guard Posts
- Way to CC & DOD